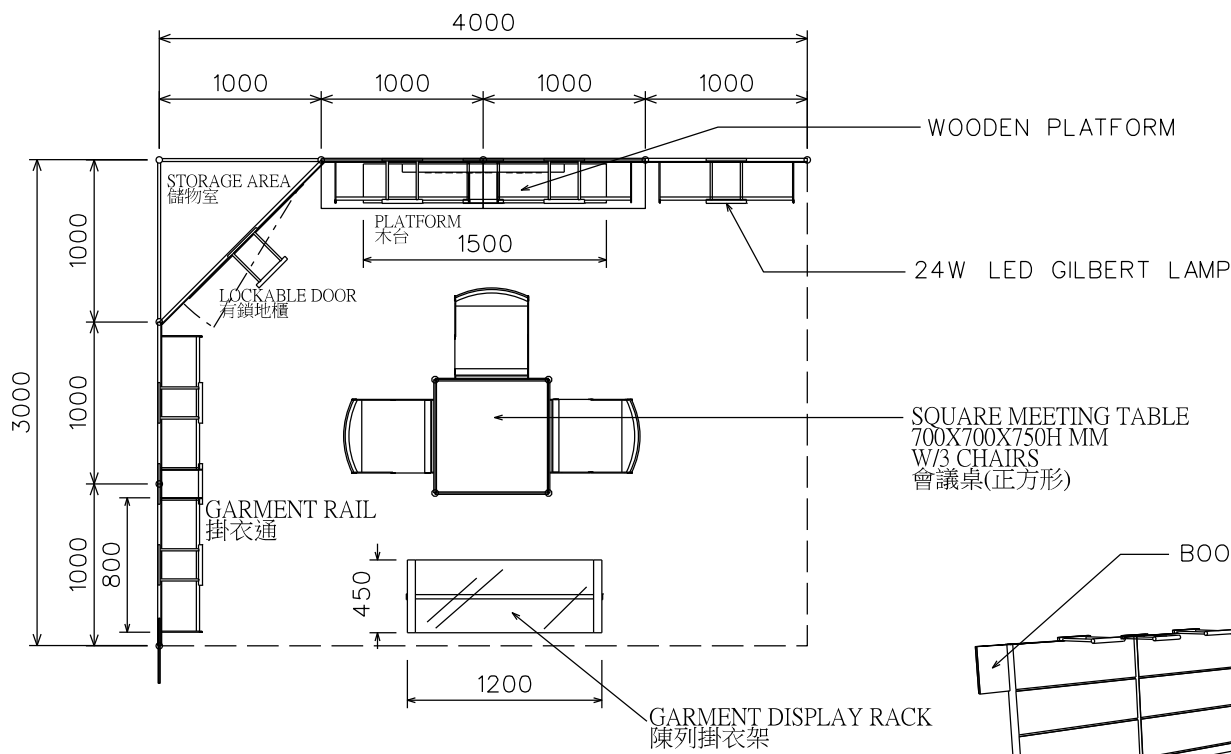
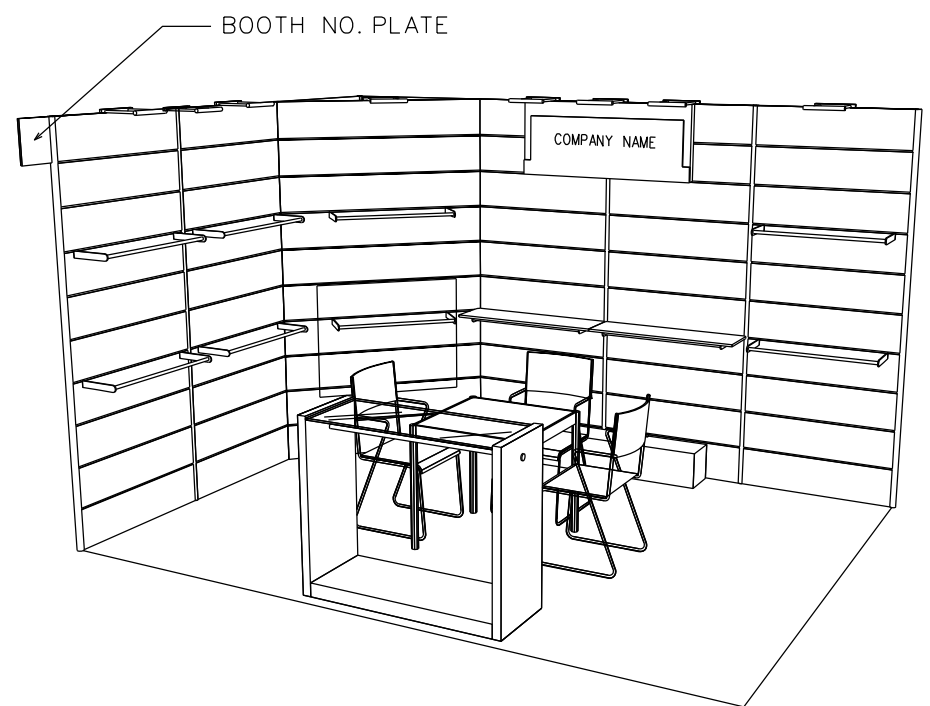


## 4M x 3M Right Corner Boutique Booth

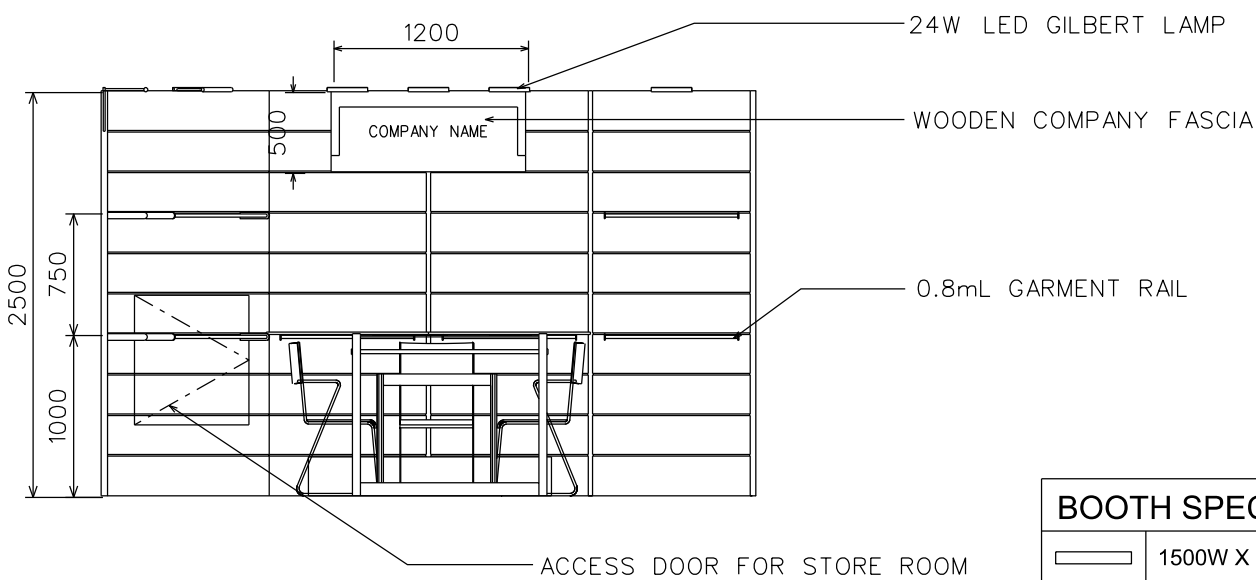
四米乘三米右邊角位時尚展台



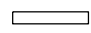
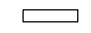
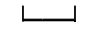
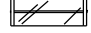


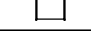
PLAN  
平面圖



PERSPECTIVE  
透視圖



ELEVATION  
正面圖

BOOTH SPECIFICATIONS		QTY.
	1500W X 240D X 240H WOODEN PLATFORM	1
	800W x 300D WOODEN DISPLAY SHELF	2
	0.8mL GARMENT RAIL	10
	1LED X 450D X 1000H GARMENT DISPLAY RACK	1
	24W LED GILBERT LAMP	8
	700W X 700D X 750H MEETING TABLE	1
	BLACK LEATHER CHAIR	3
	RUBBISH BIN & CARPET (12sqm.)	

Garment hanger will not be included as basic booth facilities.

攤位設施不包括衣架

\*The Hong Kong Trade Development Council reserves the right to change the configuration if necessary.

\*如有需要，香港貿易發展局有權更改攤位結構。